

# VERTEX

# MULTISENSOR MEASURING CENTER™

The Vertex Multisensor Measurement Systems implement new technologies to provide speed and accuracy on reliable and affordable measuring machines.

The systems include InSpec Metrology Software, a programmable optical zoom, 3x digital zoom, non-linear stage compensation, non-linear optics compensation, and advanced LED lighting.

InSpec Metrology Software provides point-and-click simplicity, proprietary edge detection, advanced lighting control and calibration, multi-sensor integration, automated calibrations, and a clear display of measurement data and tolerances.

**Multisensor**



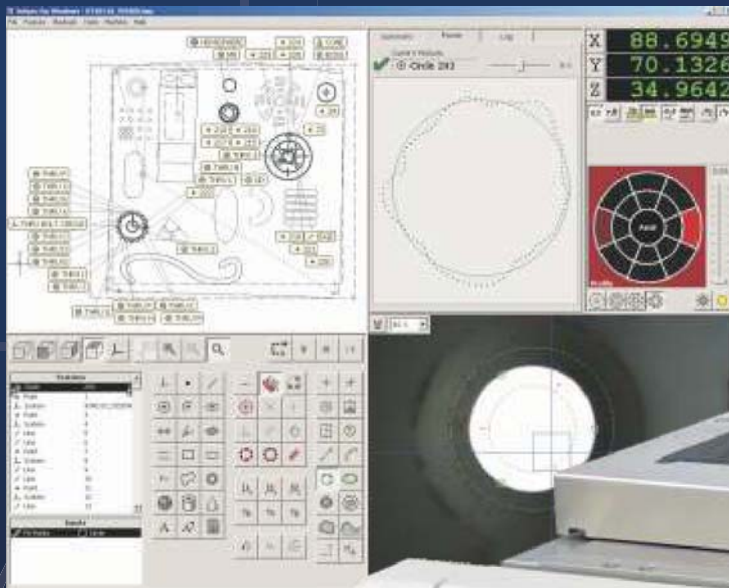
**Vision**



**Touch**



**Laser**



# MICRO-VU CORPORATION

PRECISION MEASUREMENT SYSTEMS SINCE 1959

# VERTEX

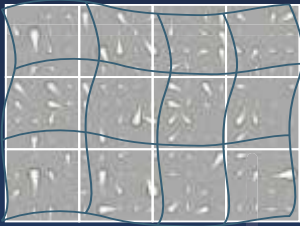
# MULTISENSOR MEASURING CENTER™

	Encoder Resolution	XY Accuracy	Z Accuracy	Measurement Capacity	Stage Capacity	Machine Dimensions	Machine Weight
<b>Vertex 251</b>	0.1 µm	2.0+L/250	2.0+L/200	250x160x160mm	10 kg	606x808x1033mm	120kg
<b>Vertex 311</b>	0.1 µm	2.6+L/175	3.0+L/150	315x315x160mm	10 kg	718x1084x1029mm	150kg
<b>Vertex 312</b>	0.1 µm	2.6+L/175	3.0+L/100	315x315x250mm	10 kg	718x1084x1208mm	160kg

Specifications subject to change without notice. Accuracy units are microns; length L units are millimeters.

### Non-Linear Calibration

Ensures Highest Accuracy  
Standard for Stage and Optics  
Automated Procedures



### Touch Probe Ready

Automated Probe Calibrations  
Automatic Approach Vectoring  
Automated Docking



### Laser Probe Ready

Point and Path Data  
Graphical Range Display  
Automated Laser Calibrations



### Rotary Indexer Ready

Vertical and Horizontal Mounting  
Faceplate and Chuck Included  
Automated Rotary Calibration



### Machine

Precision X, Y, and Z Linear Ways  
Motorized, Programmable Zoom Lens  
Proprietary Control and Amp Boards  
Machine Resident Calibrations  
Single USB Connection to Computer

### Camera and Optics

Digital, Hi-Res Video, Color (C series)  
Digital, Hi-Res Video, B&W (M series)  
19.5:1 Zoom Range, ~20x-390x (H Series)  
36:1 Zoom Range, ~15x-540x (U Series)  
Fast Servo Drive Magnification Changes  
Instant Digital Magnification Changes

### InSpec Metrology Software

Dynamic Sub-Pixel Image Processing  
Point Edge Detection Tools  
Multiple Point Edge Detection Tools  
Video Overlays and Crosshair  
On-Screen Scale  
Feature Constructions  
Tool Property Editing  
Lights, Zoom, and Zone Editing  
Instant Tool Editing on Stored Images  
Advanced Dimensioning and Tolerancing  
Automated Export Settings  
Automatic Report Construction  
Feature Summary Display  
Data Points Display (Whisker Charts)  
Feature Status Log Display  
Full Screen, Window, and Dual Monitor Display  
Image Capture and Export to JPG or BMP  
User Configuration and Password Protection

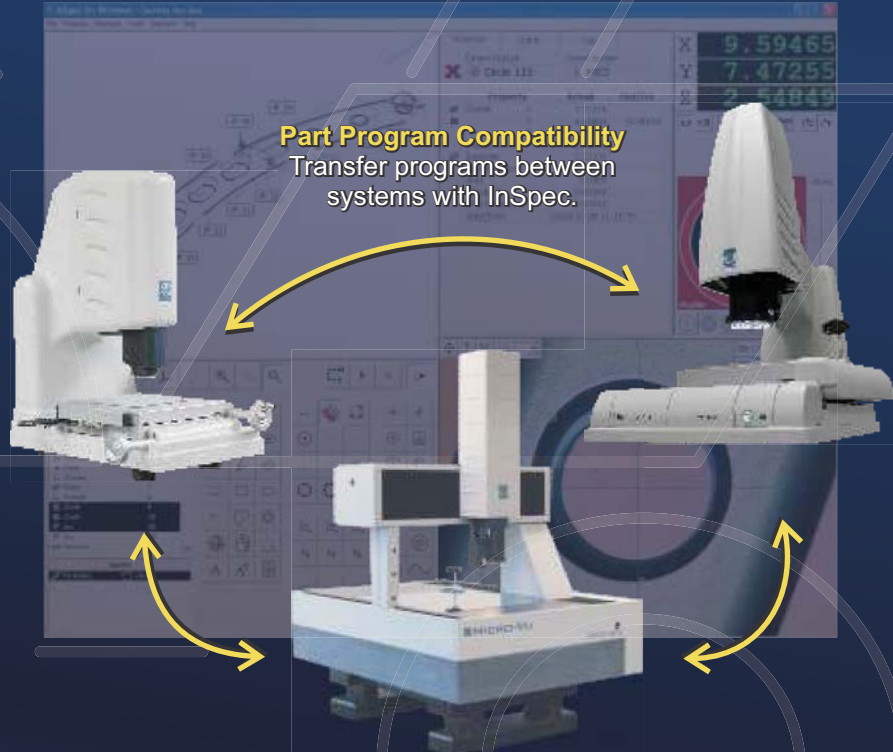
### Advanced Illumination

LED Lighting - Surface, Profile and Axial  
Multi-Ring, Multi-Sector Ringlights  
Lighting Angles from 25 to 90 Degrees  
Intuitive Graphic Interface  
Full Control to Enhance Edges  
Long Life LEDs (approx 10,000 hrs)  
InSpec Includes Lights Calibration



### Part Program Compatibility

Transfer programs between systems with InSpec.



## Micro-Vu Corporation

7909 Conde Lane Windsor, CA 95492 USA  
Phone 707 838 6272 Fax 707 838 3985

[www.microvu.com](http://www.microvu.com)



**RFM**  
RESOURCES FOR MANUFACTURING

(937) 436-4699  
sales@rfminc.net  
[www.rfminc.net](http://www.rfminc.net)