

# RSD-60 Rotary Device

## Applications

Bits and Cutters  
Medical and Dental Parts  
Multi-Sided Part Automation  
Swiss Screw Parts  
Valves and Fittings

## Advanced Features and Functions

Horizontal and Vertical Mounting Capability  
Intuitive On-Screen Joystick Interface  
Seamless Software Integration  
Rotate to Position Relative to Current Position  
Rotate to Position Relative to a Coordinate System  
Rotate to Position Based on Measurements  
Automated Rotary Calibration  
Non-Linear Calibration Saved to On-Board Memory  
Ready to Mount on Micro-Vu Vertex and Excel Systems

## Rotary Kit Contents

RSD-60 Rotary Device  
Faceplate with Hardened Finish (Ti-Al-N)  
Three-Jaw Chuck with Faceplate Adapter  
Calibration Artifact and 45° Mirror Assembly  
Stage Mounting Bracket  
Vertical Mounting Bracket  
Cables, Cable Guide, and Routing Brackets  
Tools, Mounting Hardware, & Cases

## RSD-60 Rotary Device Specifications

External Dimensions	95x150x80 mm
Centerline Height	60 mm
Maximum Speed	120°/second
Resolution	1.3 Arc Seconds
Accuracy	+/- 15 Arc Seconds
On Axis Capacity	1.5 Nm
Chuck Thread	M14 x 1.0
Weight	1.5 kg



**Micro-Vu Corporation**

7909 Conde Lane Windsor, CA 95492 USA  
Phone 707 838 6272 Fax 707 838 3985

[www.microvu.com](http://www.microvu.com)

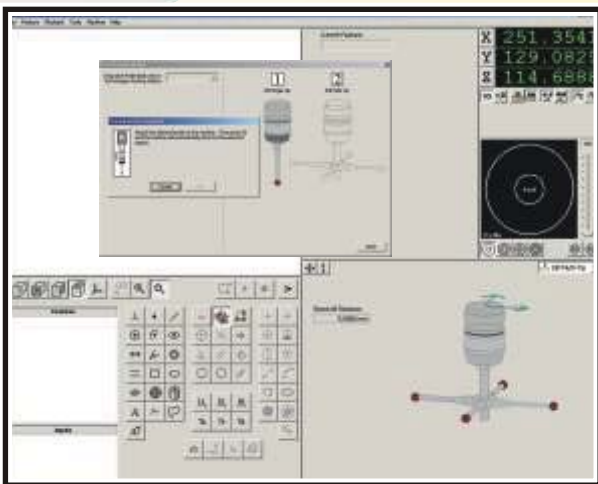


**RFM**  
RESOURCES FOR MANUFACTURING

(937) 436-4699  
sales@rfmnc.net  
[www.rfmnc.net](http://www.rfmnc.net)

# Touch Probe Kits

**Integrate Vision and Touch Measurements  
Vertex and Excel Systems are Probe-Ready  
Designed with Kinematic Fixture Mounts**



## InSpec's Advanced Touch Probe Functions

Intuitive Probe Assembly Interface  
Automated Docking in Multi-Port Probe Change Rack  
Automated Probe Tip Qualification Including Lobing  
Automated Z Scale and Perpendicularity Calibration  
Automatic Approach Vectoring and Solution Iteration  
Automatic Retract and Adjustable Standoff Distances  
FREE InSpec 2.XX Updates - No Maintenance Fees

## Touch Probe Kit Contents

RENISHAW TP20 Probe Body  
RENISHAW TP20 Probe Modules (2 ea.)  
M2 Five Way Stylus Center  
M2 Stylus (5 ea. 3 mm x 20mm)  
M2 Extensions (2 ea. 10 mm, 2 ea. 20 mm, & 1 ea. 30 mm)  
Multi-Port Probe Change Rack (2 or 4 Port)  
Module, Stylus, and Fixture Storage Box  
Micro-Vu Offset Fixture & Reference Sphere Assembly  
Instructions, Tools, Mounting Hardware, Cleaning Kit, & Case



**Micro-Vu Corporation**

7909 Conde Lane Windsor, CA 95492 USA  
Phone 707 838 6272 Fax 707 838 3985

[www.microvu.com](http://www.microvu.com)



**RFM**  
RESOURCES FOR MANUFACTURING

(937) 436-4699  
sales@rfmnc.net  
[www.rfmnc.net](http://www.rfmnc.net)