

## SPECIFICATIONS:

Measuring Volume	2000x1250x200 mm	2500x1600x200 mm
Weight Capacity	100 kg	100 kg
External Dimensions	1886x3084x1737 mm	2252x3794x1737 mm
Machine Weight	3,740 kg	6,800 kg
Bearings	Steel Linear Ways	
Stage Design	Gantry	
Base Material	Granite	

Accuracy (XY) <sup>1</sup>	5.5+L/300 µm	5.5+L/300 µm
Accuracy (Z) <sup>2</sup>	3.0+L/150 µm	3.0+L/150 µm
Max. Acceleration	1000 mm/s <sup>2</sup> (XY), 500 mm/s <sup>2</sup> (Z)	
Max. Velocity	500 mm/s (XY), 500 mm/s (Z)	
Encoder Resolution	0.1 µm	

Video	High Resolution Color or B&W
Profile, Axial, and Surface Lighting	Red LED Technology (B&W Systems) White LED Technology (Color Systems)
Optics <sup>3</sup>	12.5:1 Zoom Lens 15x-180x and 30x-360x
Software	InSpec Metrology Software
Motion Control	Linear Servo, CNC, Mouse and Joystick
Environmental	20°C ±2°C, 30-80% Humidity
Power	93-264 VAC, 47-63 Hz, 10 Amp

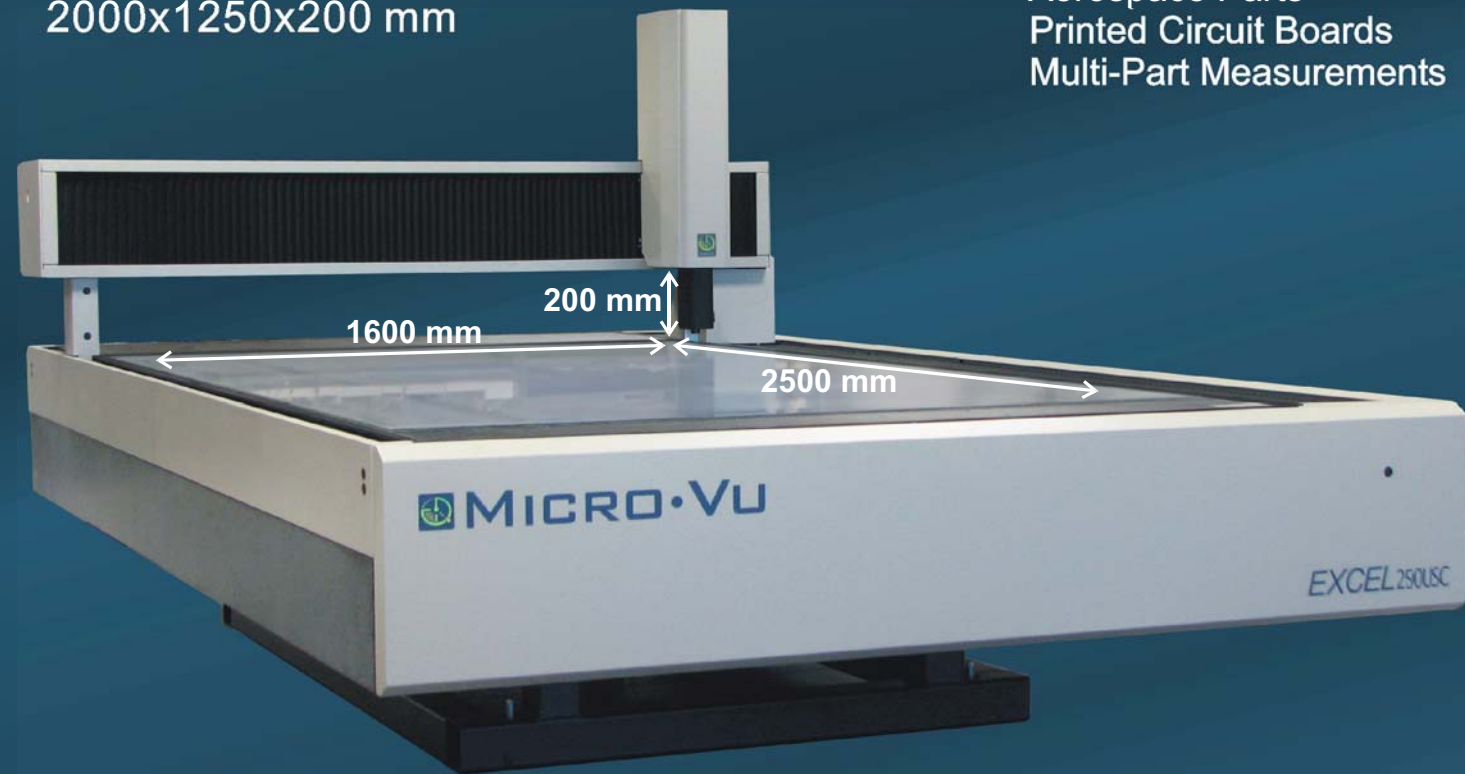
Notes:  
 1. Based on Micro-Vu Accuracy and Repeatability specification. L is length measured in millimeters.  
 2. Mechanical accuracy of Z; focus accuracy depends on the part surface.  
 3. Monitor size and resolution affect onscreen magnification values.

If You Can See It ...  
We Can Measure It!



EXTRA Large Capacity  
2500x1600x200 mm  
2000x1250x200 mm

Applications  
LCD Components  
Aerospace Parts  
Printed Circuit Boards  
Multi-Part Measurements



Advanced Lighting  
High Speed and Accuracy  
Powerful, Easy-to-Use InSpec Metrology Software



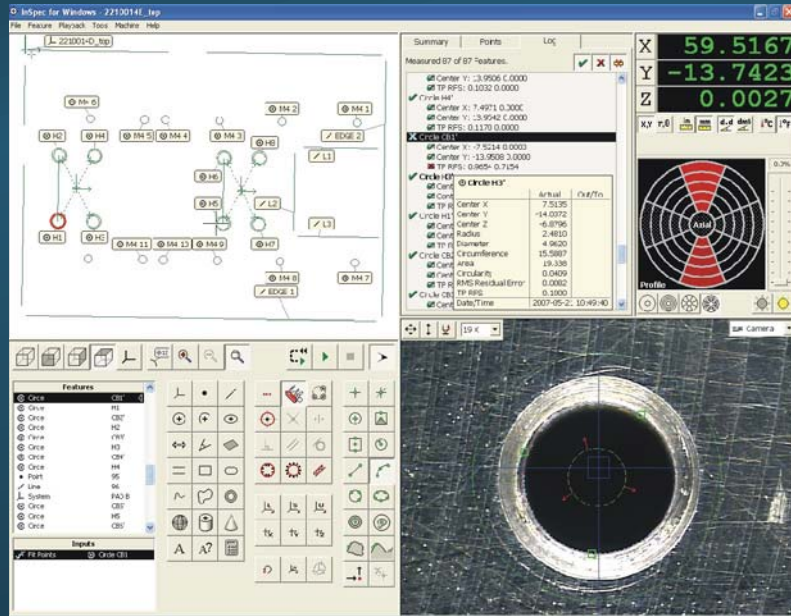
**Micro-Vu Corporation**  
 7909 Conde Lane Windsor, CA 95492  
 PH (707)838 6272 FX (707)838 3985  
 E-mail: sales@microvu.com  
 Web: http://www.microvu.com



(937) 436-4699  
 sales@rfmnc.net  
 www.rfmnc.net

# Micro-Vu Corporation

Precision Measurement Systems



### InSpec Metrology Software

- Powerful Yet Easy-to-Use
- Adaptive Vision Tools
- Point and Click Programming
- Easy Tolerancing and Reporting
- Advanced Focus Algorithms

### EXCEL Measuring Center

- High Resolution B&W or Color Video System
- 12.5:1 Programmable Zoom Lens
- 2500x1600x200mm and 2000x1250x200mm Volume
- High Precision Scales, 0.1 Micron Resolution
- Touch Probe and Rotary Indexer Ready
- High Speed Servo Drive System

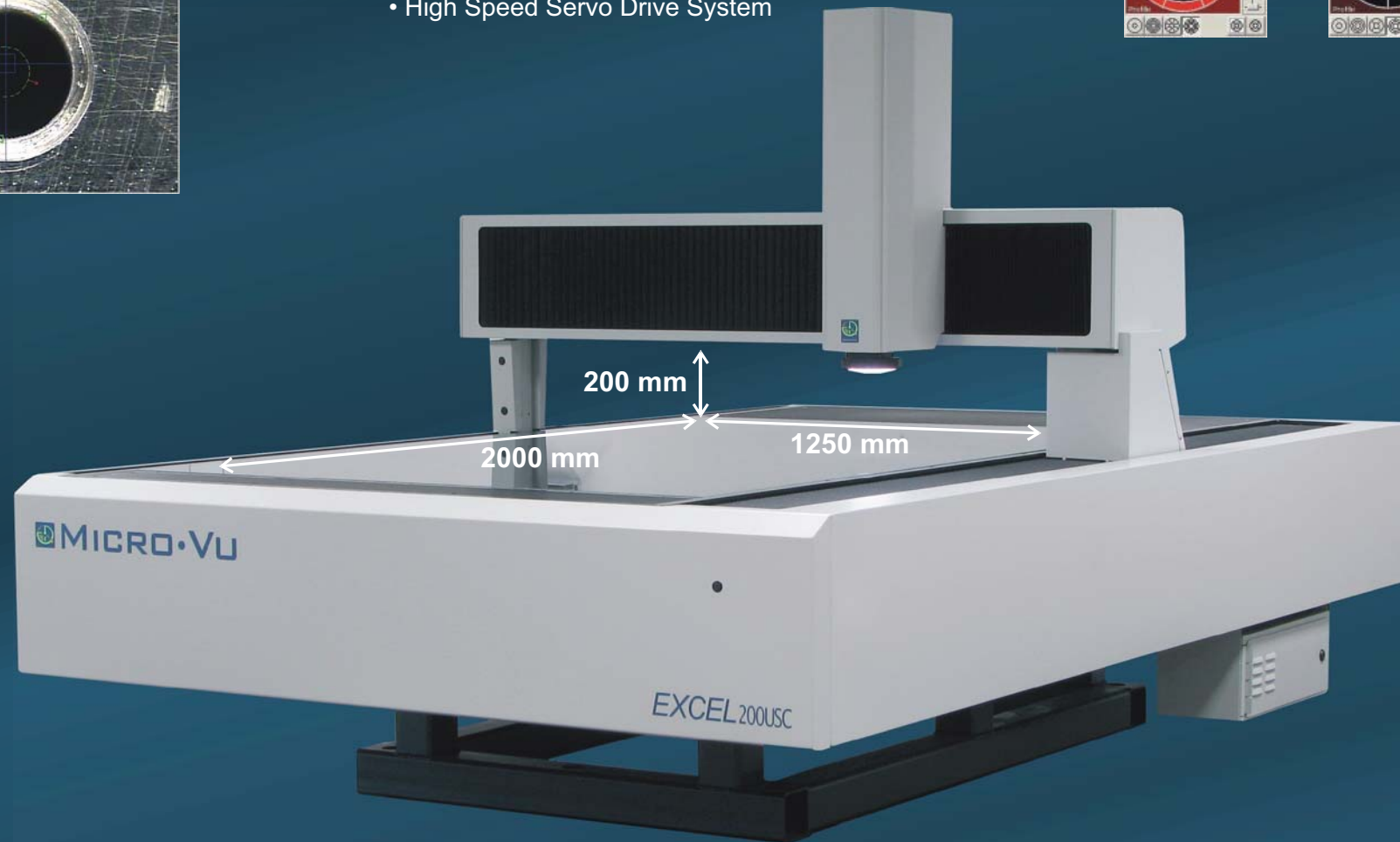
### Lighting Features

- Intuitive Graphic Controls
- Ring, Sector, Segment Selection
- Long Life LEDs, ~10,000hrs
- White Lighting for Color
- Red Lighting for B&W



### Micro-Vu Ring Lights

- Enhance Difficult-to-See Edges
- Macro: Focused Light at 27°-75°  
5 Rings, 8 Sectors, 40 Segments
- Standard: Focused Light at 47°-75°  
2 Rings, 8 Sectors, 16 Segments



### State-of-the-Art Electronics

- Multi-function Pendant
- DSP Technology
- On-Board Memory
- USB Connection
- High Reliability



### Touch Probe Kits

- Automated Probe Calibrations
- Automatic Approach Vectoring
- Automatic Retract
- Adjustable Standoff Distances
- 2, 4, and 6 Station Probe Racks



### Rotary Indexer Kit

- Ready to Mount
- Seamless Software Integration
- Automated Rotary Calibration
- Includes Faceplate and Chuck

