

InSpec Multi-Part Exporting

Exporting multiple parts from InSpec for use in QC-CALC Real-Time



Measurement and Quality Related Products and Services

• Vision Systems • Software Retrofits • Calibration & Repair • Part Programming • RFM, INC
• Coordinate Measuring • Gages & Fixtures • Reverse Engineering • Training • P.O. Box 751432
• Renishaw Probes • Surface Texture • Part Inspection • ISO 17025 Accredited • Dayton, OH 45475
P: 937.436.4699 • F: 937.436.9244 • www.rfmnc.net • Online Shop: www.renishawprobe.com

Index

- [Introduction](#)
- Examples
 - [Incorrect setup](#)
 - [Correct setup](#)
- [How-to Instructions](#)

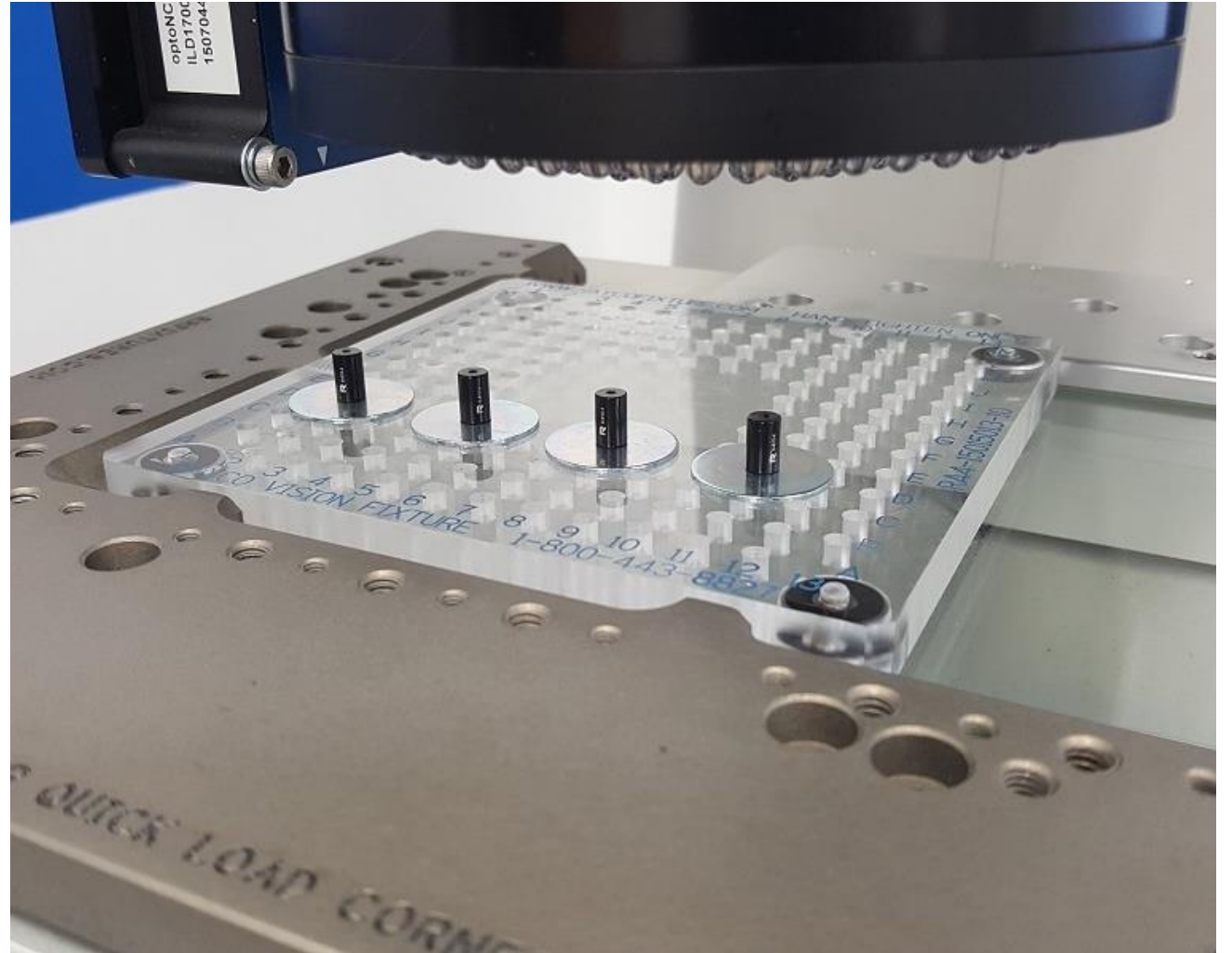


Measurement and Quality Related Products and Services

• Vision Systems • Software Retrofits • Calibration & Repair • Part Programming • RFM, INC
• Coordinate Measuring • Gages & Fixtures • Reverse Engineering • Training • P.O. Box 751432
• Renishaw Probes • Surface Texture • Part Inspection • ISO 17025 Accredited • Dayton, OH 45475
P: 937.436.4699 • F: 937.436.9244 • www.rfmnc.net • Online Shop: www.renishawprobe.com

Introduction

In the example used in the document, we are measuring four parts simultaneously and exporting the data to QC-CALC Real-Time.

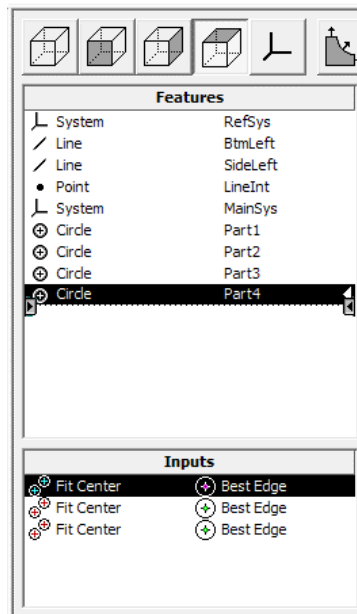


Measurement and Quality Related Products and Services

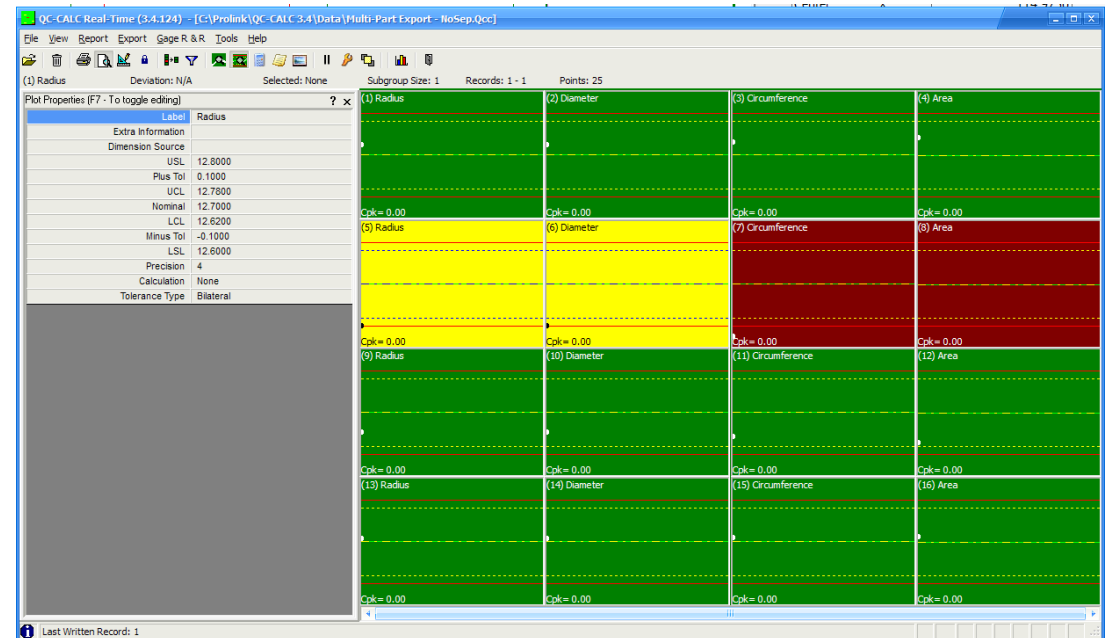
- Vision Systems
 - Software Retrofits
 - Calibration & Repair
 - Part Programming
 - Coordinate Measuring
 - Gages & Fixtures
 - Reverse Engineering
 - Training
 - Renishaw Probes
 - Surface Texture
 - Part Inspection
 - ISO 17025 Accredited
- RFM, INC
P.O. Box 751432
Dayton, OH 45475
P: 937.436.4699 • F: 937.436.9244 • www.rfminc.net • Online Shop: www.renishawprobe.com

Example of incorrect multi-part setup

The following image is an example program using four parts. Each of the four parts has four dimensioned features.



The resulting QC-CALC interpretation of this data is that there is only one part which has 16 features. (as opposed to four parts with four features)



Setting up InSpec for multiple parts – Step 1

- Create, tolerance, and set the export settings for your first part.

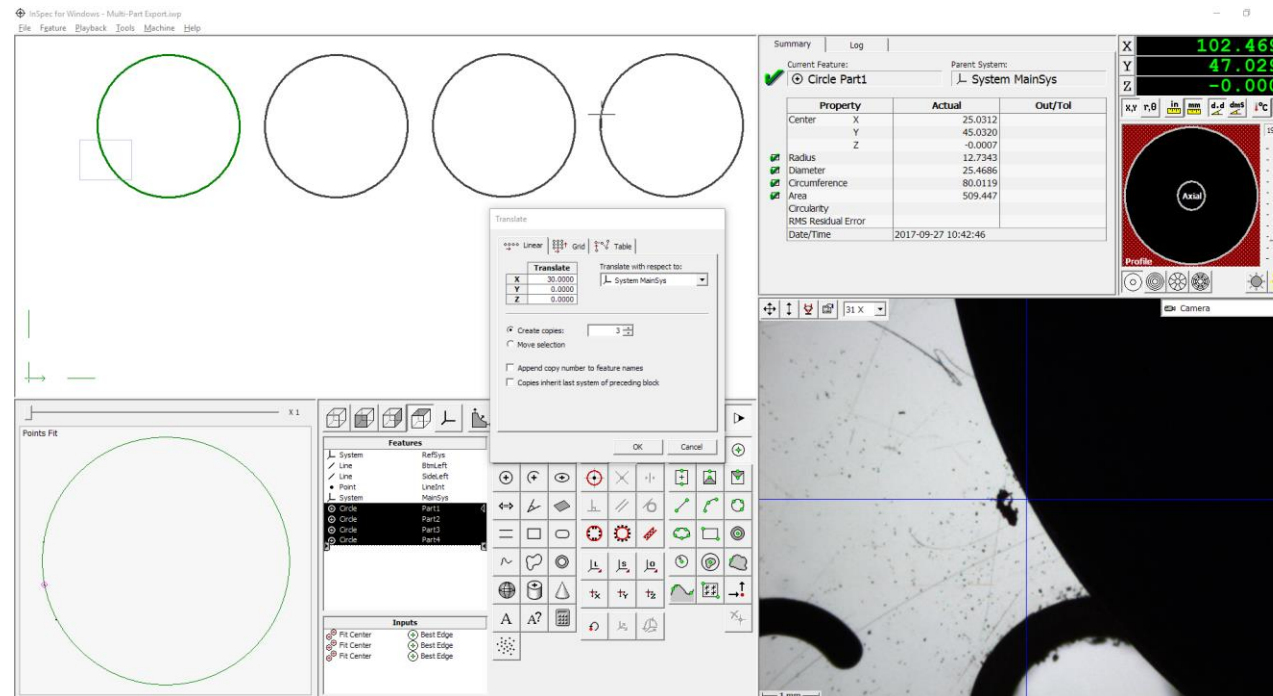
In this example, we will export the nominals, tolerances and labels for the selected dimensions.

The screenshot displays the InSpec software interface. On the left, a 'Points Fit' window shows a green circle overlaid on a grayscale image of a part. The main window shows a 'Feature Exports - Circle Part1' dialog box with 'Circle' selected as the feature type. The 'Export Property?' table is checked for Radius, Diameter, Circumference, and Area. The 'Feature Tolerances - Circle Part1' dialog box is also open, showing a table of nominal and bilateral tolerances for the selected dimensions.

Property	Actual	Nominal	Upper	Lower	Dev/Nom
Center X	25.0312	24.9580			0.0732
Center Y	45.0320	44.9349			0.0971
Center Z	51.5213	51.4008			0.1204
Center θ	60.9324	60.9511			-0.0187
Center φ	-0.0007	-0.0007			0.0000
Radius	12.7343	12.7000	0.1000	-0.1000	0.0343
Diameter	25.4686	25.4000	0.2000	-0.2000	0.0686
Circumference	80.0119	79.7965	0.5000	-0.5000	0.2154
Area	509.4472	506.7075	5.0000	-5.0000	2.7397

Setting up InSpec for multiple parts – Step 2

- Translate the first part to create the required amount you will be measuring.

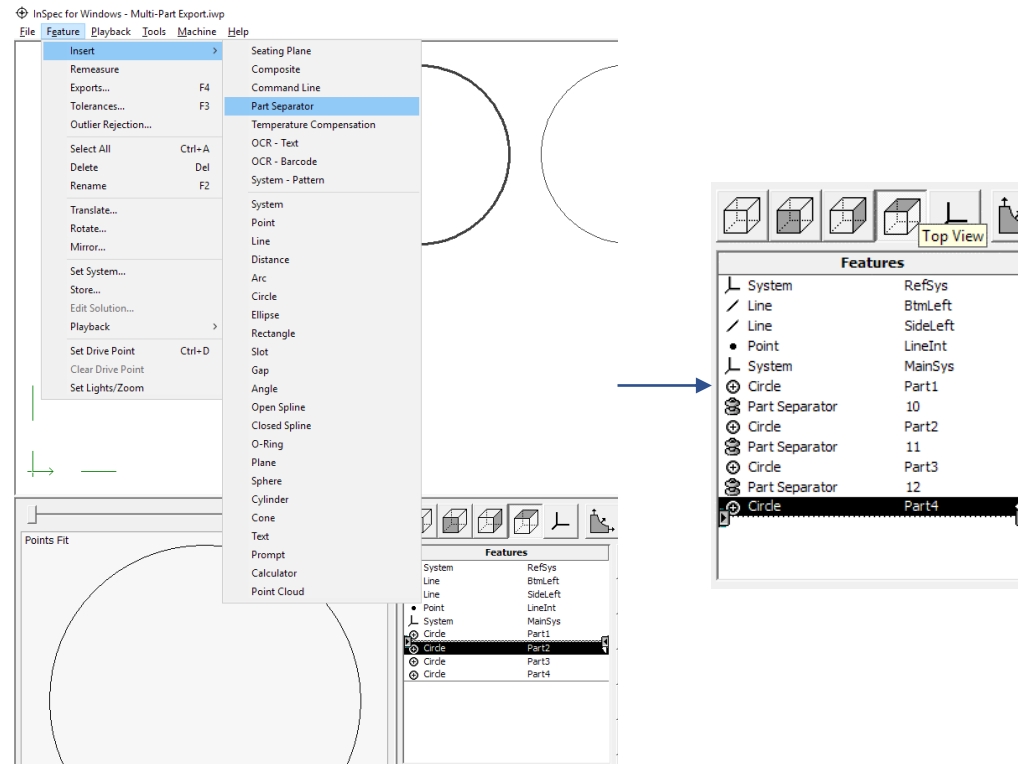


Measurement and Quality Related Products and Services

- Vision Systems
 - Software Retrofits
 - Calibration & Repair
 - Part Programming
 - Coordinate Measuring
 - Gages & Fixtures
 - Reverse Engineering
 - Training
 - Renishaw Probes
 - Surface Texture
 - Part Inspection
 - ISO 17025 Accredited
- RFM, INC
P.O. Box 751432
Dayton, OH 45475
- P: 937.436.4699 • F: 937.436.9244 • www.rfminc.net • Online Shop: www.renishawprobe.com

Setting up InSpec for multiple parts – Step 3

- Insert a Part Separator between each part in the Features list.



NOTE: In this example, we have only one feature per part. Your parts may require multiple features. In this situation, remember to place the separator between parts and not between individual features.



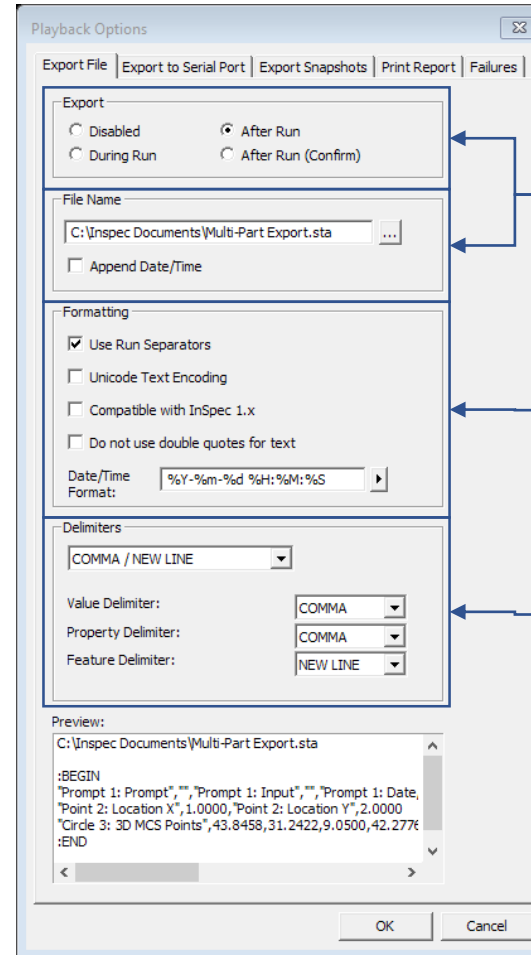
Measurement and Quality Related Products and Services

- Vision Systems
 - Software Retrofits
 - Calibration & Repair
 - Part Programming
 - Coordinate Measuring
 - Gages & Fixtures
 - Reverse Engineering
 - Training
 - Renishaw Probes
 - Surface Texture
 - Part Inspection
 - ISO 17025 Accredited
- RFM, INC
P.O. Box 751432
Dayton, OH 45475
- P: 937.436.4699 • F: 937.436.9244 • www.rfminc.net • Online Shop: www.renishawprobe.com

Setting up InSpec for multiple parts – Step 4

- Check the Playback Options settings to make sure they are correct.

Menu bar → Tools → Playback Options



Choose based on your preference/setup.

Use Run Separators must be checked.

Delimiters should be listed as shown here.